

QUICK GUIDE TO STUDENT SUPPORT AND WELLBEING

Correct as at 01/03/2023

TIMETABLES AND APPOINTMENT BOOKINGS FROM THE SIZ - 01243 816222 - HELP@CHI.AC.UK

DIRECTOR OF STUDENTS, SUPPORT AND INFORMATION SERVICES



DAVE CORCORAN
Director SSIS and
Lead Safeguarding Officer
01243 816459
07876 870718
D.Corcoran@chi.ac.uk

CHAPLAINCY



REV'D DR. ALISON GREEN
Chaplain
01243 816041
07974 835025
Alison.Green@chi.ac.uk



VANESSA CHURCH
Business and Systems Manager
01243 793468
V.Church@chi.ac.uk



CLARE MARCZAK
Student Wellbeing and
Disability & Dyslexia Service Manager
01243 816366
C.Marczak@chi.ac.uk

DISABILITY AND DYSLLEXIA SERVICE

dyslexia@chi.ac.uk - disability@chi.ac.uk - 01243 812076



REGINA KAROUSOU
Lead SpLD &
Neurodiversity
Adviser
01243 816045
Dyslexia@chi.ac.uk



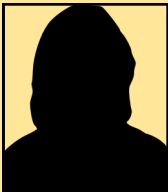
STEVE O'MELIA
Disability Adviser
01243 812076
Disability@chi.ac.uk
S.OMelia@chi.ac.uk



DONA DIANI-WALSHA
SpLD and
Neurodiversity
Adviser
01243 812143
Dyslexia@chi.ac.uk



HELEN DIGNUM
Sensory Adviser
01243 812145
07469 351734
Disability@chi.ac.uk
H.Dignum@chi.ac.uk



HEATHER BALLAMY
Study Support
Administrator
01243 812090
studysupport@chi.ac.uk
H.Ballamy@chi.ac.uk



BECKY EBSWORTH
Case Work and
DSA Administrator
01243 812076
dyslexia@chi.ac.uk
disability@chi.ac.uk
R.Ebsworth@chi.ac.uk

STUDENT HEALTH AND WELLBEING

STUDENT HEALTH SERVICE

studenthealth@chi.ac.uk
01243 816111/07739 983703



BECKY POTHEARY
Lead Nurse Health
Adviser and
Sexual Violence
and Misconduct
Liaison Officer
R.Potheary@chi.ac.uk



CHRISSE DUNN
Nurse Health
Adviser
C.Dunn@chi.ac.uk



LORNA HAMMOND
Wellbeing Adviser
Wellbeing@chi.ac.uk



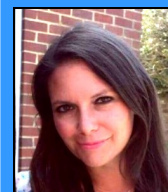
CARMEN BENEÀ
Wellbeing
Administrator
Wellbeing@chi.ac.uk

WELLBEING SERVICE

Wellbeing@chi.ac.uk
Wellbeing.chi.ac.uk



NATALIJA WEBB
Mental Health
Adviser
Wellbeing@chi.ac.uk



JANE SMITH
Wellbeing Adviser
and Counsellor
Wellbeing@chi.ac.uk



ROBYN THWAITES
Wellbeing Adviser
Wellbeing@chi.ac.uk



KELLY JUPP
Wellbeing
Administrator
Wellbeing@chi.ac.uk

STUDENT MONEY TEAM

Studentmoney@chi.ac.uk - 01243 816038



ALI COLLINS
Lead Student
Money Adviser
A.Collins@chi.ac.uk



TBA
Student Money
Adviser

INTERNATIONAL ADVICE

international@chi.ac.uk - 01243 812146



PÄIVI LEIVO
International Advice
Manager
01243 812194
P.Leivo@chi.ac.uk



GEMMA WILLIAMS
International
Student Adviser
01243 812192
G.Williams@chi.ac.uk

STUDENT ENGAGEMENT AND RETENTION ADVISER

Studentengagement@chi.ac.uk



KEIRA STJOHN-MOSSE
Student Engagement
and Retention Adviser
01243 816092
K.StJohn-Mosse@chi.ac.uk



HOLLAND WHITE
Student Engagement
and Retention Intern
H.White@chi.ac.uk